

Multifil

**PROPRIETARY FILLED PTFE
SLIDING BEARING TAPE**



APPLICATIONS

Industrial – Machine tool ways, gibs and other sliding applications

CHARACTERISTICS

- Superior sliding bearing material which can be easily bonded to any clean, rigid substrate
- Reduces vibration
- Tested acc. to ASTM E595/ECSS-Q-ST-70-02C - Outgassing properties of materials used in Spacecraft equipment

AVAILABILITY

Bearing forms made to order: Bearing Tape

Tape with 0.015" to 0.125" (0.38 to 3.2 mm) thickness and 12" (305 mm) width or 24" (610 mm) width

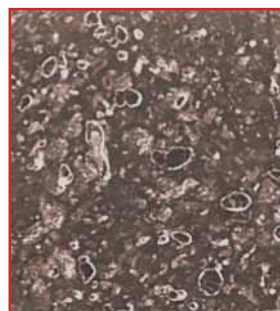


BEARING PROPERTIES		UNITS	VALUE
GENERAL			
Maximum load, p	Static	N/mm ²	70
	Dynamic	N/mm ²	35
Operating temperature	Min	°C	- 200
	Max	°C	280
DRY			
Maximum sliding speed, U		m/s	2.5
Maximum pU factor		N/mm ² x m/s	0.32
Coefficient of friction, f			0.07
GREASE / OIL LUBRICATED			
Maximum sliding speed, U		m/s	1.25
Coefficient of friction, f			0.05
RECOMMENDATIONS			
Shaft surface roughness, Ra		µm	0.2 - 0.4
Shaft surface hardness		HB	> 200

* Depending on operating conditions

OPERATING PERFORMANCE	
Dry	Very Good
Oil lubricated	Very Good
Grease lubricated	Very Good
Water lubricated	Good
Process fluid lubricated	Good

MICROSECTION



PTFE tape with proprietary fillers